

DISTRIBUÉ PAR / DISTRIBUTED BY:



11365, 57e Avenue
Montréal (Québec)
H1E 4K1

Tél.: **514-494-5000**
Sans frais 1-877-494-5001
Courriel: lp2000@bellnet.ca
Site Web : www.lp2000ehp.com

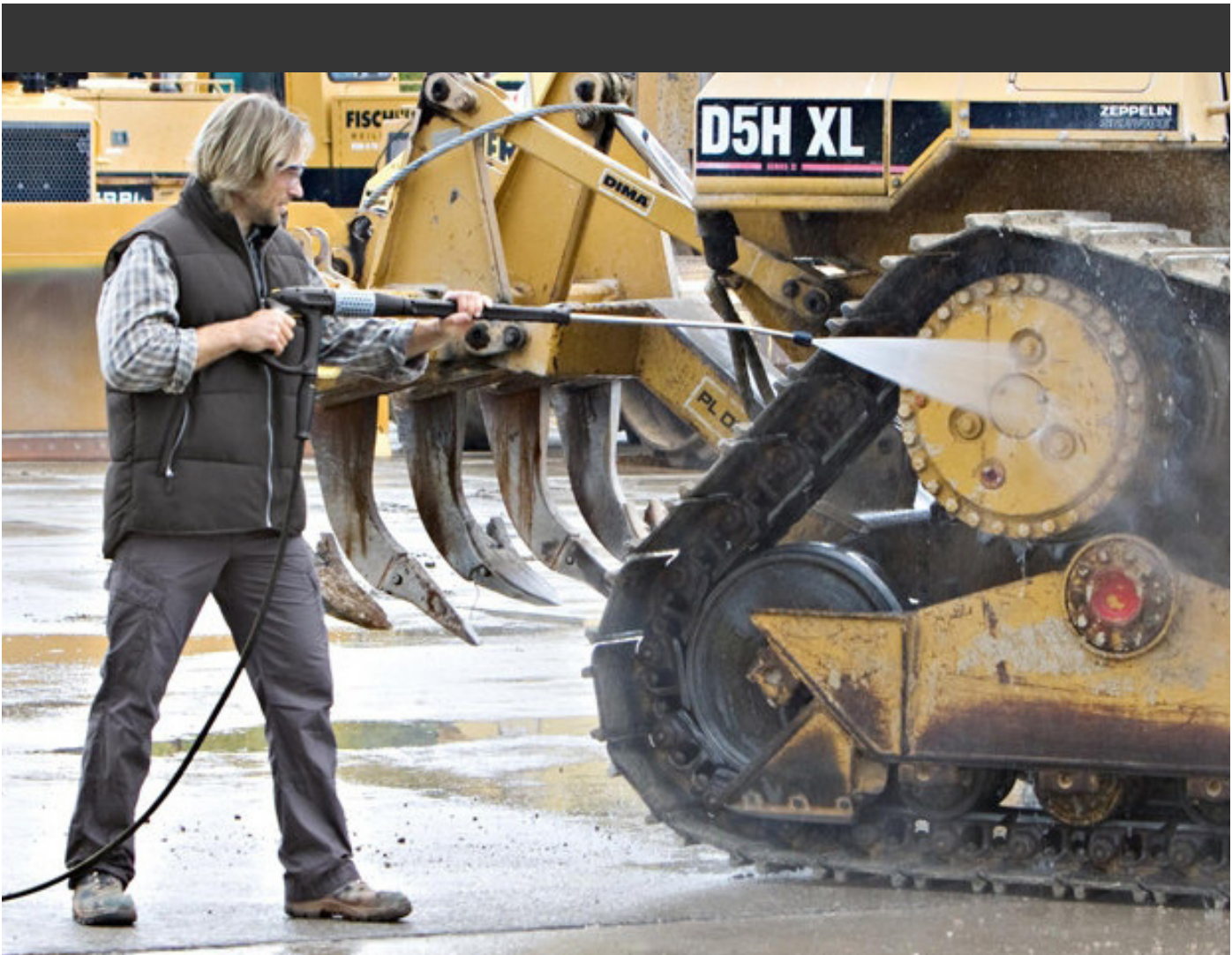
LANDA®
Kärcher Group



Commercial & Industrial Pressure Washers, Parts, and Accessories



514-494-5000 / 1-877-494-5001
(CONTACTEZ-NOUS / CONTACT US)



Pressure Washers

Look for Landa Kärcher Group's Value-Added Icons

Throughout the following pages, look for these icons displayed with each Landa Kärcher Group pressure washing system. Find out what makes our professional cleaning equipment some of the most unique and sought after equipment in the industry.



HOT WATER SYSTEM

Landa Kärcher Group's hot water pressure washers are your solution for cleaning greasy spills and grimy surfaces.



COLD WATER SYSTEM

Landa Kärcher Group's cold water pressure washers help you remove caked on dirt and other debris from surfaces.



COOL-BYPASS**

Circulates water to prevent overheating the pump or contaminating the water tank detergent.



TRU-TRAC TECHNOLOGY

Keeps the belt parallel with the pump and motor when adjusting the belt tension.



TRU-TITE SYSTEM

Uses a spring-loaded idler arm to keep the belt aligned and tensioned, creating less wear and tear on the belt.



LANCOM REMOTE

Controls pump, burner and detergent remotely from up to 300' away.



AUTO START/STOP

Protects during unattended operation by shutting down the pump during non-use. Optional on some series, consult your local dealer for full details.



TRANS-HEAT TECHNOLOGY*

Captures and uses the heat from engine exhaust to increase water temperatures, providing better fuel efficiency.



7-YEAR PUMP WARRANTY

Most Landa Kärcher Group pumps come with a 7-year warranty, wear parts excluded.



QUICK SHIP

Models marked with the Quick Ship logo are in stock and ship and ready to ship immediately.

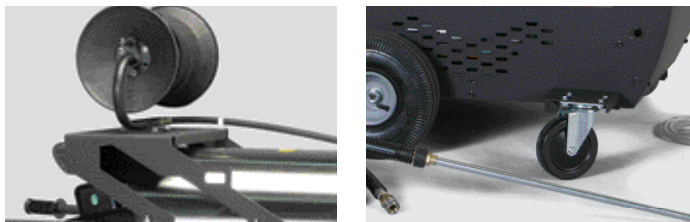
*Patent No. US-2011-0232696-A1 **Patent No. 8,496,188 B2

HOT



Hot Water > Electric Powered > Diesel/Oil Heated

Simple and affordable with efficient and reliable high-pressure hot water, this series is designed for ease of operation as well as portability. Don't let the simplicity fool you because this series includes all the rugged components you've come to expect in Landa Kärcher Group products, including a diesel burner matched up with our long lasting Dura-Coil made with cold rolled Schedule 80 steel. Match the HOT performance and quality specifications up against any of our rivals, and you will quickly discover the value is undeniable!



- Up to 3.5 GPM, 2000 PSI
- Belt-Drive and Direct-Drive Pumps with 7-year warranty
- Burner mounted on the end for easy access; industrial-strength motor
- 13" Flat-Free Tires
- Optional lifting bracket and hose reel platform
- Optional caster wheel kit for easy maneuverability

Model #	Part #	GPM	PSI	Pump	Pump RPM	Motor HP	Volts	Phase	Amps	ShipWt(lbs)
HOT2-11026D*	1.109-093.0	2.0	1000	Axial	3480	1.5	115	1	18	425
HOT2-15026D*	1.109-094.0	1.9	1500	Axial	3450	2.0	120	1	20	428
HOT2-11024D	1.109-095.0	2.0	1000	Direct	1725	1.5	120	1	18	516
HOT2-15024D	1.109-096.0	1.9	1500	Direct	1725	2.0	120	1	20	529
HOT3-11024D	1.109-097.0	2.8	1000	Direct	1725	2.0	120	1	20	530
HOT4-20024A	1.109-098.0	3.5	2000	Belt	1350	5.0	230	1	25	561
HOT4-20024G	1.109-099.0	3.5	2000	Belt	1350	5.0	208	1	27	581
Extra-Hot Steamer (310° F):										
HOT3-30036D*	1.109-100.0	2.0	300	Axial	3480	1.5	115	1	12	519

* 1-year warranty on axial pumps.

Quantity	Model #	Part #	Description
5	HOT2-15024D	8.922-738.0	5-Pack Bulk Savings

Field Installed Options & Accessories

- 8.750-487.0 Pivot Hose Reel (100' capacity)
- 8.750-477.0 Non-Pivot Hose Reel (100' capacity)
- 8.917-541.0 Hose Reel Platform with E-Zee Reel & Plumbing (holds 100' of 3/8" hose, not included)*
- 8.917-522.0 Hose Reel Platform Only*
- 8.917-525.0 Wheel Kit (2 casters)
- 8.917-506.0 Float Tank with Inlet Detergent Metering Valve
- 9.802-283.0 Hour Meter (machine pre-wired for easy installation)

* Should not be used as a lifting rack on the MHC



PHW



Hot Water > Electric Powered > Diesel/Oil Heated

This workhorse has been a flagship for more than a quarter of a century, and now has patented Cool-Bypass* technology that limits temperature buildup in the pump during periods of inactivity, prolonging the life of the equipment. Another innovation introduced to an already long list of features is Snap 'N Go kits, which allow easy upgrades to time delay shutdown, wireless remote operation, or auto start-stop. This industrial series includes our large frame LT Pump affixed to our proprietary Tru-Trac belt tension system, and an oversized 10-gallon diesel fuel capacity allows you to complete challenging cleaning jobs without interruption. The integrated float tank and metering valve allows for the easy introduction of detergents when needed. Whether cleaning hog confinements, farm equipment, or fleet vehicles, the PHW series is built to deliver top quality results.



- Up to 4.8 GPM, 3000 PSI
- Belt-Drive Landa Kärcher Group Pump with 7-year warranty
- Patented Cool-Bypass*
- 13" Flat-Free Tires
- Industrial-strength electric motor with multiple voltage options
- Many options: Time Delay, Auto Start/Stop, LanCom wireless remote control

*Patent US 8,496,188 B2

Model #	Part #	GPM	PSI	Pump RPM	Motor HP	Volts	Phase	Amps	ShipWt(lbs)
PHW3-11024D	1.109-078.0	2.8	1000	1725	2.0	120	1	20	590
PHW4-22024A	1.109-079.0	4.0	2200	1025	6.2	230	1	29	625
PHW4-22024B	1.109-080.0	4.0	2200	1025	6.2	230	3	19	610
PHW4-22024C	1.109-081.0	4.0	2200	1025	6.2	460	3	11	615
PHW4-22024F	1.109-082.0	3.5	2200	940	5.0	575	3	10	615
PHW4-22024G	1.109-083.0	4.0	2200	1025	6.2	208	1	31	625
PHW4-22024H	1.109-084.0	4.0	2200	1025	6.2	208	3	21	610
PHW4-30024A	1.109-085.0	3.9	3000	975	8.2	230	1	38	640
PHW4-30024B	1.109-086.0	3.9	3000	975	8.2	230	3	24	625
PHW4-30024C	1.109-087.0	3.9	3000	975	8.2	460	3	12	635
PHW4-30024F	1.109-088.0	3.5	3000	975	7.5	575	3	12	635
PHW4-30024G	1.109-089.0	3.9	3000	975	8.2	208	1	40	640
PHW4-30024H	1.109-090.0	3.9	3000	975	8.2	208	3	26	625
PHW5-30024B	1.109-091.0	4.8	3000	1500	10.0	230	3	30	625
PHW5-30024C	1.109-092.0	4.8	3000	1500	10.0	460	3	16	635

Field Installed Options & Accessories

- 8.917-509.0 LanCom Wireless Remote Control Kit
- 8.725-709.0 Additional LanCom Remote
- 8.917-817.0 LanCom Wall Mount Bracket
- 8.917-507.0 Snap-N-Go Auto Start/Stop Kit
- 8.917-508.0 Snap-N-Go Time Delay Kit
- 8.750-487.0 Pivot Hose Reel (100' capacity)
- 8.750-477.0 Non-Pivot Hose Reel (100' capacity)

Field Installed Options & Accessories

- 8.917-798.0 Wheel Kit (2 casters)
- 8.754-435.0 13" Flat-Free Tire (qty 1)
- 8.917-683.0 Steam Combo Kit
- 8.917-714.0 Lifting Bracket/Hose Reel Platform Only
- 8.917-713.0 Lifting Bracket/Hose Reel Platform with E-Zee Reel & Plumbing (holds 100' of 3/8" hose, not included)

ENG



Hot Water > Electric Powered > Natural Gas or LP Heated

If you're tight on space but have big cleaning needs, Landa Kärcher Group's patented*ENG is the perfect machine for you! There isn't a more compact natural gas pressure washer on the market. The ENG packs a ton of features into an incredibly tiny footprint. Start with Landa Kärcher Group's patented Cool-Bypass** system that keeps the water temperature low while the machine is in bypass mode, extending the life of the pump. Other innovative features include Landa Kärcher Group's Tru-Tite belt tensioning system, which relies on a spring-loaded idler arm to keep the belt aligned and tensioned, reducing wear and tear on the belt; and the Fielder's Choice system, which allows you to switch the inlet/outlet connections from one side to the other, adding versatility and making installation a breeze.



- Up to 9.5 GPM, 3200 on large units; up to 5.0 GPM, 3000 PSI on small units
- Compact footprint packs a lot of cleaning ability into a small space
- Patented Cool-Bypass** helps to extend the life of the pump
- Tru-Tite belt tensioning system helps to extend the life of the belt
- Optional LanCom Remote allows users to continue working without having to run back and forth to the machine

*Patent USD735,959S **Patent US 8,496,188B2

Model #	NG Part #	LP Part #	GPM	PSI	Pump RPM	NG BTU*	Motor HP	Volts	Phase	Amps	LxWxH	Ship Wt (lbs)
ENG6-32024B	1.109-825.0	1.109-862.0	6.3	3200	1525	507,000	15.0	230	3	39	64"x35"x61"	1825
ENG6-32024C	1.109-826.0	1.109-863.0	6.3	3200	1525	507,000	15.0	460	3	19	64"x35"x61"	1825
ENG6-32024F	1.109-827.0	1.109-864.0	6.3	3200	1525	507,000	15.0	575	3	18	64"x35"x61"	1825
ENG6-32024H	1.109-828.0	1.109-865.0	6.3	3200	1525	507,000	15.0	208	3	39	64"x35"x61"	1825
ENG8-32024B	1.109-829.0	1.109-866.0	8.0	3200	1370	658,000	20.0	230	3	46	64"x35"x61"	1840
ENG8-32024C	1.109-830.0	1.109-867.0	8.0	3200	1370	658,000	20.0	460	3	26	64"x35"x61"	1840
ENG8-32024F	1.109-831.0	1.109-868.0	8.0	3200	1370	658,000	20.0	575	3	21	64"x35"x61"	1840
ENG8-32024H	1.109-832.0	1.109-869.0	8.0	3200	1370	658,000	20.0	208	3	60	64"x35"x61"	1840
ENG10-30024B	1.109-833.0	1.109-870.0	9.5	3000	1400	816,000	20.0	230	3	52	64"x35"x61"	1910
ENG10-30024C	1.109-834.0	1.109-871.0	9.5	3000	1400	816,000	20.0	460	3	26	64"x35"x61"	1910
ENG10-30024F	1.109-835.0	1.109-872.0	9.5	3000	1400	816,000	20.0	575	3	21	64"x35"x61"	1910
ENG10-30024H	1.109-836.0	1.109-873.0	9.5	3000	1400	816,000	20.0	208	3	60	64"x35"x61"	1910

* See product bid specifications for details regarding LP BTUs. Ratings may vary.

Field Installed Options & Accessories

- 8.917-509.0 LanCom Wireless Remote System
- 8.921-832.0 Additional LanCom Wireless Remote
- 8.917-817.0 LanCom Wireless Remote Wall Mount Bracket
- 8.921-774.0 Wired Remote Control Kit for Pump & Burner
- 8.921-773.0 Wired Remote Control Kit for Detergent (requires 8.921-774.0)
- 8.922-157.0 Remote Control Box (wired)
- 8.917-507.0 Snap-N-Go Auto Start/Stop Kit w/ Time Delay (no remote)
- 9.807-646.0 Snap-N-Go Auto Start/Stop Kit w/o Time Delay (wired remote - no lockout)

Field Installed Options & Accessories

- 8.917-508.0 Snap-N-Go Time Delay Kit
- 8.921-776.0 Steam Combo Kit
- 9.801-040.0 Draft Diverter, 10"
- 8.717-730.0 Draft Diverter, 12"
- 8.753-474.0 Draft Damper, 10"
- 8.753-478.0 Draft Damper, 12"
- 8.753-707.0 Reducer, Stack 10" to 8"
- 8.753-706.0 Reducer, Stack 12" to 10"
- 8.923-213.0 Fielder's Choice System

ENG



Hot Water > Electric Powered > Natural Gas or LP Heated

Landa Kärcher Group offers the ENG with an even more compact footprint than the 15/20 HP models. Even with a smaller frame, this ENG provides the ultimate in cleaning action, and includes many of the same great features as its larger counterpart. Small in size but big on innovation and quality, the ENG series provides a lot of bang for the buck!



OPTION OPTION

Model #	NG Part #	LP Part #	GPM	PSI	Pump RPM	NG BTU*	Motor HP	Volts	Phase	Amps	LxWxH	Ship Wt (lbs)
ENG4-20024A	1.109-800.0	1.109-837.0	3.5	2000	1350	310,000	5.0	230	1	25	49"x24"x48"	815
ENG4-22024A	1.109-801.0	1.109-838.0	4.0	2200	1250	364,000	6.2	230	1	29	49"x24"x48"	843
ENG4-22024B	1.109-802.0	1.109-839.0	4.0	2200	1250	364,000	6.2	230	3	16	49"x24"x48"	843
ENG4-22024C	1.109-803.0	1.109-840.0	4.0	2200	1250	364,000	6.2	460	3	7	49"x24"x48"	843
ENG4-22024F	1.109-804.0	1.109-841.0	4.0	2200	1250	364,000	6.2	575	3	6.5	49"x24"x48"	843
ENG4-22024G	1.109-805.0	1.109-842.0	4.0	2200	1250	364,000	6.2	208	1	30	49"x24"x48"	843
ENG4-22024H	1.109-806.0	1.109-843.0	4.0	2200	1250	364,000	6.2	208	3	18	49"x24"x48"	843
ENG4-30024A	1.109-807.0	1.109-844.0	3.9	3000	1225	354,000	8.2	230	1	36	49"x24"x48"	856
ENG4-30024B	1.109-808.0	1.109-845.0	3.9	3000	1225	354,000	8.2	230	3	25	49"x24"x48"	856
ENG4-30024C	1.109-809.0	1.109-846.0	3.9	3000	1225	354,000	8.2	460	3	11	49"x24"x48"	856
ENG4-30024F	1.109-810.0	1.109-847.0	3.9	3000	1225	354,000	8.2	575	3	14	49"x24"x48"	856
ENG4-30024G	1.109-811.0	1.109-848.0	3.9	3000	1225	354,000	8.2	208	1	38	49"x24"x48"	856
ENG4-30024H	1.109-812.0	1.109-849.0	3.9	3000	1225	354,000	8.2	208	3	27	49"x24"x48"	856
ENG5-23024A	1.109-813.0	1.109-850.0	5.0	2300	1200	439,000	8.2	230	1	36	49"x24"x48"	856
ENG5-23024B	1.109-814.0	1.109-851.0	5.0	2300	1200	439,000	8.2	230	3	25	49"x24"x48"	856
ENG5-23024C	1.109-815.0	1.109-852.0	5.0	2300	1200	439,000	8.2	460	3	11	49"x24"x48"	856
ENG5-23024F	1.109-816.0	1.109-853.0	5.0	2300	1200	439,000	8.2	575	3	14	49"x24"x48"	856
ENG5-23024G	1.109-817.0	1.109-854.0	5.0	2300	1200	439,000	8.2	208	1	38	49"x24"x48"	856
ENG5-23024H	1.109-818.0	1.109-855.0	5.0	2300	1200	439,000	8.2	208	3	27	49"x24"x48"	856
ENG5-30024A	1.109-819.0	1.109-856.0	4.8	3000	1160	415,000	10.0	230	1	42	49"x24"x48"	885
ENG5-30024B	1.109-820.0	1.109-857.0	4.8	3000	1160	415,000	10.0	230	3	26	49"x24"x48"	885
ENG5-30024C	1.109-821.0	1.109-858.0	4.8	3000	1160	415,000	10.0	460	3	15	49"x24"x48"	885
ENG5-30024F	1.109-822.0	1.109-859.0	4.8	3000	1160	415,000	10.0	575	3	14	49"x24"x48"	885
ENG5-30024G	1.109-823.0	1.109-860.0	4.8	3000	1160	415,000	10.0	208	1	49	49"x24"x48"	885
ENG5-30024H	1.109-824.0	1.109-861.0	4.8	3000	1160	415,000	10.0	208	3	32	49"x24"x48"	885

* See product bid specifications for details regarding LP BTUs. Ratings may vary.



Conseil-Vente-Service
514-494-5000 / 1-877-494-5001

VHG



Hot Water > Electric Powered > Natural Gas or LP Heated

Compact but heavy duty, this natural gas model's footprint is a mere 24" x 53" for the smallest unit, making it an ideal choice for congested work areas or wash bays where space is at a premium. The small size makes it no less efficient; with cleaning power up to 3000 PSI and 8 GPM, this machine delivers enough cleaning action to tackle a variety of challenges, and includes an optional wireless remote control. The VHG is especially adept at cleaning and maintaining the appearance of the dirtiest fleet or construction equipment.



- Up to 8 GPM and 3000 PSI
- Belt-Drive Landa Kärcher Group Pump with 7-year warranty
- Patented Cool-Bypass*
- Smart Relay control provides control over runtime, auto start stop and shut down functionality
- Optional remote allows users to work up to 300 feet away

*Patent US 8,496,188 B2

Model #	Part #	GPM	PSI	Pump RPM	Motor HP	Volts	Phase	Amps	Approx BTUs	Ship Wt (lbs)
VHG4-20024A	1.109-534.0	3.5	2000	1175	5.0	230	1	25	364,000	750
VHG4-22024A	1.109-535.0	4.0	2200	835	6.2	230	1	27	364,000	790
VHG4-22024B	1.109-536.0	4.0	2200	835	6.2	230	3	15	364,000	770
VHG4-22024C	1.109-537.0	4.0	2200	835	6.2	460	3	8	364,000	780
VHG4-22024G	1.109-538.0	4.0	2200	835	6.2	208	1	29	364,000	790
VHG4-22024H	1.109-539.0	4.0	2200	835	6.2	208	3	18	364,000	780
VHG4-30024A	1.109-541.0	3.9	3000	775	8.2	230	1	36	354,000	868
VHG4-30024B	1.109-542.0	3.9	3000	775	8.2	230	3	25	354,000	815
VHG4-30024C	1.109-543.0	3.9	3000	775	8.2	460	3	15	354,000	815
VHG4-30024G	1.109-544.0	3.9	3000	775	8.2	208	1	38	354,000	815
VHG4-30024H	1.109-545.0	3.9	3000	775	8.2	208	3	27	354,000	815
VHG5-30024B	1.109-546.0	4.8	3000	1035	10.0	230	3	29	480,000	780
VHG5-30024C	1.109-547.0	4.8	3000	1035	10.0	460	3	14	480,000	835
VHG5-30024H	1.109-548.0	4.8	3000	1035	10.0	208	3	30	480,000	780
VHG6-30024B	1.109-549.0	6.0	3000	1525	15.0	230	3	39	507,000	1675
VHG6-30024C	1.109-550.0	6.0	3000	1525	15.0	460	3	19	507,000	1675
VHG8-30024B	1.109-552.0	8.0	3000	1370	20.0	230	3	52	658,000	1845
VHG8-30024C	1.109-553.0	8.0	3000	1370	20.0	460	3	26	658,000	1845

Field Installed Options & Accessories

Available for All Models

- 8.924-815.0 Remote Operator Station Kit
- 8.924-816.0 Electronic Detergent Kit
- 8.924-814.0 Wireless 6 Channel Remote Kit
- 8.924-871.0 Wall Mount Remote Kit
- 8.756-329.0 Additional Wireless Remote
- 9.802-633.0 LP Gas Regulator Assembly

Available for Models Over 5 GPM

- 8.717-730.0 Draft Diverter, 12" (15 & 20 HP models)
- 8.904-068.0 LP Conversion Kit (15 & 20 HP models) ♦
- 8.903-545.0 SS Coil Wrap, 4-Panel Skirt & Cover ♦

♦ Factory Installed

Field Installed Options & Accessories

Available for Models Up to 5 GPM

- 8.903-543.0 Wheeled Cart for VHG Propane Model
- 9.801-040.0 Draft Diverter, 10"
- 9.801-019.0 LP Conversion Kit ♦
- 8.903-541.0 SS Coil Wrap, 4-Panel Skirt & Cover ♦
- Options For Older VHG Units Only [Pre Smart Relay]
- 8.941-545.0 Additional LanCom Remote
- 8.930-131.0 Wall Mount Bracket for Fixed LC Remote

VNG



Hot Water > Electric Powered > Natural Gas or LP Heated

A variety of exciting options and features make the VNG one of the most versatile machines in the industry. Housed in an attractive and sturdy metal cabinet, this machine offers easy access to its control panel and indicator lights. The VNG is loaded with quality and safety features throughout and is flexible enough to support up to four optional remote wash stations, making it the industry standard for natural gas heated hot water pressure washers.



- Up to 10 GPM; up to 3000 PSI
- Belt-Drive Landa Kärcher Group Pump with 7-year warranty
- Features time delay shutdown, electronic ignition, and pressure gauge
- Smart Relay control provides control over runtime, auto start/stop and shut down functionality
- Optional remote allows users to work up to 300 feet away

*Patent US D665,901 S

Model #	Part #	GPM	PSI	Pump RPM	Motor HP	Volts	Phase	Amps	Approx BTUs	Ship Wt (lbs)
VNG4-20024A	1.109-563.0	4.0	2000	930	6.2	230	1	27	360,000	1010
VNG4-20024B	1.109-564.0	4.0	2000	930	6.2	230	3	15	360,000	990
VNG4-20024C	1.109-565.0	4.0	2000	930	6.2	460	3	8	360,000	990
VNG4-20024H	1.109-568.0	4.0	2000	930	6.2	208	3	18	360,000	1000
VNG4-30024A	1.109-569.0	3.9	3000	775	8.2	230	1	36	354,000	1030
VNG4-30024B	1.109-570.0	3.9	3000	775	8.2	230	3	25	354,000	1030
VNG4-30024C	1.109-571.0	3.9	3000	775	8.2	460	3	15	354,000	1030
VNG4-30024H	1.109-574.0	3.9	3000	775	8.2	208	3	27	354,000	1010
VNG6-30024B	1.109-575.0	6.0	3000	1525	15.0	230	3	39	507,000	1830
VNG6-30024C	1.109-576.0	6.0	3000	1525	15.0	460	3	19	507,000	1830
VNG8-30024B	1.109-579.0	8.0	3000	1370	20.0	230	3	52	658,000	1845
VNG8-30024C	1.109-580.0	8.0	3000	1370	20.0	460	3	26	658,000	1845
VNG8-30024H	1.109-582.0	8.0	3000	1370	20.0	208	3	54	658,000	1845
VNG10-20024B	1.109-559.0	10.0	2000	1630	20.0	230	3	46	816,000	1925
VNG10-20024C	1.109-560.0	10.0	2000	1630	20.0	460	3	23	816,000	1925

Field Installed Options & Accessories

Available for All Models

- 8.924-815.0 Remote Operator Station Kit
- 8.924-816.0 Electronic Detergent Kit
- 8.924-814.0 Wireless 6 Channel Remote Kit
- 8.924-871.0 Wall Mount Remote Kit
- 8.756-329.0 Additional Wireless Remote
- 9.801-040.0 Draft Diverter, 10" (for models up to 4 GPM)
- 8.717-730.0 Draft Diverter, 12" (for models over 4 GPM)

♦ Factory Installed

Field Installed Options & Accessories

LP-Gas Conversion Kits

- 9.801-019.0 LP Conversion Kit (for models up to 4 GPM) ♦
- 8.904-068.0 LP Conversion Kit (for models over 4 GPM) ♦
- 9.802-633.0 LP Regulator Assembly

Options For Older VNG Units Only [Pre Smart Relay]

- 8.941-545.0 Additional LanCom Remote
- 8.930-131.0 Wall Mount Bracket for Fixed LanCom Remote



VHP



Hot Water > Electric Powered > LP Gas Heated

Looking for a heavy-duty pressure washer that can handle the dirt and grime indoors and out? Then the versatile VHP is the right machine for the task. Available in both 120V and 230V configurations, this hot water pressure washer features cleaning power up to 2.5 GPM and 2000 PSI. And, since the VHP is built with tubed pneumatic tires, this heavy-duty series delivers power wherever the job takes you. It is designed for vapor type propane only.



- Up to 2.5 GPM, 2000 PSI
- Belt-Drive Landa Kärcher Group Pump with 7-year warranty
- Four tubed pneumatic tires provide excellent maneuverability
- Extra-durable heating coil is made of leak-free, cold-rolled, Schedule 80 steel pipe and features a five-year warranty
- Features a rugged 10 gauge steel chassis with polyester powder coat finish

Model #	Part #	GPM	PSI	Pump RPM	Motor HP	Volts	Phase	Amps	Approx BTUs	Ship Wt (lbs)
VHP2-15024D	1.109-556.0	1.8	1500	1100	2	120	1	17	140,000	470
VHP3-20024A	1.109-557.0	2.5	2000	1375	5	230	1	20	245,000	500

Field Installed Options & Accessories

- 8.903-538.0 Stainless Steel Coil Wrap & Motor Cover
- 8.903-501.0 Electric Ignition (convenience in lighting pilot)



EHW



Hot Water > Electric Powered > Electric Heated

The perfect choice for in-plant cleaning, this series couldn't be easier to operate – just plug it in and get hot water! The lack of combustible fuels or hazardous fumes makes it safe to store under the stairs or in a closet. The heating coil is uniquely designed for immersion in a tank of hot water for reduced maintenance needs, and a layer of oil floating atop the water assists in heat retention and prevents evaporation. The EHW is enclosed in a stainless steel cabinet and mounted on a platform, and can be fitted with our LanCom wireless remote system, time delay shutdown, and other labor saving options. Generating no fumes or noise, and easy to store, you'll wonder why you didn't choose this unit for your indoor cleaning needs ages ago!



- Up to 4.2 GPM, and up to 3000 PSI
- Creates instant hot water without an open flame, combustible fuel or hazardous fumes, making it ideal for in-plant cleaning
- Belt-Drive Landa Kärcher Group Pump with 7-year warranty
- Time delay shutdown allowing operator to adjust from 2-10 minutes
- Optional LanCom Remote allows users to work up to 300 feet away

Model #	Part #	GPM	PSI	Pump RPM	Motor HP	Volts	Phase	KW	Amps	ShipWt(lbs)
EHW4-20024C	1.109-500.0	4.2	2000	1015	6.2	460	3	55	40.5	620
EHW4-30024C	1.109-501.0	3.5	3000	845	7.5	460	3	59	40.5	640
EHW4-20024F	1.109-954.0	3.5	2000	845	5.0	575	3	46	40.5	620
EHW4-30024F	1.109-955.0	3.5	3000	845	7.5	575	3	49	40.5	640

Field Installed Options & Accessories

- 8.930-163.0 LanCom Wireless Remote Control System, 1-Step Detergent *♦
- 8.930-177.0 LanCom Wireless Remote Control System, 2-Step Detergent *♦
- 8.930-358.0 Additional LanCom Remote *
- 8.930-131.0 Wall Mount Bracket for Fixed LanCom Remote *

♦ Factory Installed * For 460V Units Only

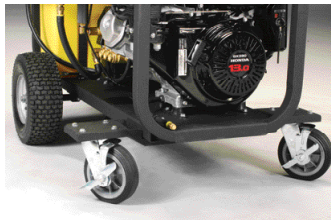


MHC



Hot Water > Gasoline Powered > Diesel/Oil Heated

With a rugged frame, stainless steel top wrap, and 13" flat-free tires, the MHC is both durable and portable, and easy to maneuver over flat surfaces and around corridors and hallways. The control panel is strategically located, allowing you to easily adjust the thermostat and hour meter depending on your needs. A technologically advanced engine-and-regulator combination eliminates the need for a battery or electrical connection, making it a convenient and versatile on-site choice for keeping your restaurant, resort, spa, or hotel clean and inviting!



- Up to 3.5 GPM, 3500 PSI
- Direct-Drive Landa Kärcher Group Pump with 7-year warranty
- Schedule 80 heating coil with stainless steel top wrap
- 13" Flat-free tires and a wheel brake for added stability
- Optional caster wheel kit for easier maneuverability
- Optional Cool-Bypass*

*Patent US 8,496,188 B2a

Model #	Part #	GPM	PSI	Pump RPM	Engine	CCs	Ship Wt (lbs)
MHC3-25124	1.110-037.0	2.5	2500	3400	Subaru EX21	211	550
MHC3-30324	1.110-038.0	3.0	3000	3400	Honda GX270	270	575
MHC4-30324	1.110-039.0	3.5	3000	3400	Honda GX340	337	590
MHC4-30324E	1.110-040.0	3.5	3000	3400	Honda GX340	337	595
MHC4-30324E/S	1.110-041.0	3.5	3000	3400	Honda GX390	389	600
MHC4-35324E	1.110-042.0	3.5	3500	3400	Honda GX390	389	600

Field Installed Options & Accessories

- 8.915-496.0 360° Pivot Hose Reel Kit (100' capacity)
- 8.750-487.0 Pivot Hose Reel (100' capacity)
- 8.750-477.0 Non-Pivot Hose Reel (100' capacity)
- 8.917-541.0 Hose Reel Platform with E-Zee Reel & Plumbing (holds 100' of 3/8" hose, not included)*
- 8.917-522.0 Hose Reel Platform Only*
- 8.915-404.0 Wheel Kit (2 front caster wheels)
- 8.915-406.0 Float Tank & Inlet Detergent Valve
- 8.916-184.0 Lifting Bracket
- 8.915-494.0 Trailer Mount Kit

* Should not be used as a lifting rack on the MHC

MHP



Hot Water > Gasoline Powered > Diesel/Oil Heated

Looking for the ruggedness of a skid style pressure washer with the convenience and portability of a smaller unit? The MHP is the perfect hybrid, combining a hardy 1 1/4-inch square steel tube and Schedule 80 coil with an extra narrow chassis and frame for easy maneuverability through doorways and other tight spaces. The side panels are easily removable should your machine require servicing. An optional hose reel and wheel kit add value and versatility to this unit, helping you clean even the most cramped spaces easily and efficiently.



- Up to 3.8 GPM, 3500 PSI
- Heavy-duty Honda or Vanguard engines with keyed electric start
- Belt-Drive Landa Kärcher Group Pump with 7-year warranty
- Industrial-strength electric motor with multiple voltage options
- Optional pivot hose reel
- Optional caster wheel kit for easier maneuverability

*Patent US D665,901 S

Model #	Part #	GPM	PSI	Pump RPM	Engine	CCs	Ship Wt (lbs)
MHP4-30324E	1.110-501.0	3.5	3000	1160	Honda GX340	337	555
MHP4-35324E	1.110-503.0	3.8	3500	1185	Honda GX390	389	595
MHP4-35224E	1.110-502.0	3.8	3500	1185	Vanguard 18	479	560

E = Electric start engine (battery not included)

Field Installed Options & Accessories

- 8.750-487.0 Pivot Hose Reel (100' capacity)
- 8.904-533.0 Wheel Kit (4 caster wheels)
- 8.903-530.0 Stainless Steel Outer Wrap ♦
- 8.903-596.0 Float Tank and Inlet Detergent Metering Valve ♦

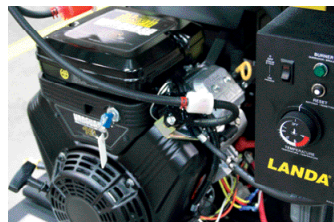
♦ Factory Installed

PGDC



Hot Water > Gasoline Powered > Diesel/Oil Heated

Using a 12-volt DC burner assembly offers a rugged skid frame with robust cleaning performance specifications at an economical price. This self-contained workhorse can tackle virtually any outdoor cleaning project once you provide the water. An optional wheel kit makes this already versatile machine even more portable, allowing for easy transport on-site. With a reliable Honda or Vanguard gasoline engine, this machine can provide hours of continuous worry-free cleaning power.



- Up to 4.7 GPM, 3500 PSI
- Heavy-duty Honda or Vanguard engines with keyed electric start
- Belt-Drive Landa Kärcher Group Pump with 7-year warranty
- Schedule 80 heating coil with stainless steel top wrap
- Safety features include a rupture disk, thermal pump protector, and high-temperature shutoff to guard against buildup of excessive heat or pressure

*Patent US D665,901 S

Model #	Part #	GPM	PSI	Pump RPM	Engine	CCs	Ship Wt (lbs)
PGDC4-35324E	1.110-049.0	3.8	3500	1185	Honda GX390	389	697
PGDC5-35224E	1.110-050.0	4.7	3500	1185	Vanguard 18	479	630
PGDC5-35324E	1.110-051.0	4.7	3500	1185	Honda GX630	688	653
PGDC8-30324E	1.110-072.0	8.0	3000	1460	Honda GX660	688	760

E = Electric start engine (battery not included)

Field Installed Options & Accessories

- 8.904-525.0 Wheel Kit (4 tires)
- 8.915-496.0 360° Pivot Hose Reel Kit (100' capacity)
- 8.903-522.0 Non-Pivot Hose Reel Mounting Kit (100' capacity)
- 9.804-067.0 E-Zee Hose Reel (100' capacity)
- 8.749-946.0 Vinyl Skid Cover
- 8.916-588.0 Stainless Steel Bottom Wrap ♦
- 8.916-606.0 Float Tank with Inlet Detergent Metering Valve ♦
- 8.903-447.0 Float Tank with Inlet Detergent Metering Valve ♦

♦ Factory Installed

PGHW



Hot Water > Gasoline Powered > Diesel/Oil Heated

There is a reason this model has been our most popular skid unit for over two decades – classic rugged design with a compact footprint. Whether you drop this into the bed of a pickup or mount on a custom trailer, this gasoline-powered machine is meant to travel to wherever the dirt and grime needs to be attacked. With models capable of delivering up to 5 gallons of water per minute and up to 5,000 pounds per square inch of surface pressure you can choose a model tailor fit for your individual cleaning application. You will find this model a favorite among contract cleaners, facilities managers, municipalities, and oil field service companies because it delivers solid performance and unmatched reliability.



- Up to 5.0 GPM, 5000 PSI
- Belt-Drive Landa Kärcher Group Pump with 7-year warranty
- Industrial-duty gasoline-powered engine with overhead valves
- Rugged 1½-inch square tube open-air frame with forklift guides
- Rust-free float tank provides backflow protection
- Inlet detergent injection applies soap while washing in high-pressure mode

Model #	Part #	GPM	PSI	Pump RPM	Engine	CCs	Ship Wt (lbs)
PGHW4-30324E	1.110-048.0	3.5	3000	1125	Honda GX390	389	725
PGHW5-30224E	1.110-046.0	4.8	3000	1375	Vanguard 18	479	825
PGHW5-35324E	1.110-045.0	4.7	3500	1360	Honda GX630	688	840
PGHW4-40324E	1.110-047.0	4.0	4000	1425	Honda GX630	688	840
PGHW5-50524E*	1.110-512.0	5.0	5000	1585	Kawasaki FD2750D	745	1285
PGHW8-30324E	1.110-710.0	8.0	3000	1460	Honda GX660	850	850

E = Electric start engine (battery not included) * PGHW5-50524E cannot be sold into or out of California

Field Installed Options & Accessories

- 8.915-496.0 360° Pivot Hose Reel Kit (100' capacity)
- 8.903-522.0 Non-Pivot Hose Reel Mounting Kit (100' capacity)
- 9.804-067.0 E-Zee Hose Reel (100' capacity)
- 8.904-525.0 Wheel Kit (4 tires)**
- 8.749-946.0 Vinyl Skid Cover**
- 8.916-585.0 Steam Valve Kit
- 8.916-588.0 Stainless Steel Bottom Wrap ♦

* Factory Installed

** Not available for PGHW5-50524E



PDHW



Hot Water > Diesel Powered > Diesel/Oil Heated

This series fills the gap for those who are looking for the versatility of a compact pressure washer with the ruggedness and cleaning power of a full-size skid unit. It's packed with features and options that make it highly adaptable for use in a variety of different applications. You'll find a 2,900-watt generator that provides plenty of power for the burner, as well as a 120V outlet for low-wattage needs; forklift guides for easy transporting, mounting brackets to attach to a trailer, and an oversized, tilt-out fuel tank that'll assure you have hours of uninterrupted cleaning. A sturdy steel frame is available in a polyester powder coat finish for added weather protection, or all-stainless steel for the ultimate insurance in high corrosion environments, making this unit the ideal choice for an offshore oil drilling operation. Highly versatile and built with the same attention to quality you've come to expect from Landa Kärcher Group, the PDHW is a great all-around "mid-size" choice for all your cleaning needs!



- Up to 4.7 GPM, 3500 PSI
- Industrial-duty Kubota diesel engine with keyed electric start
- Belt-Drive Landa Kärcher Group Pump with 7-year warranty
- High-efficiency 12V burner on some models
- Conveniently placed control panel features indicator lights and hour meter
- Optional wheel kit, hose reel platform, spark arrester, and lift/stack platform

Model #	Part #	GPM	PSI	Pump RPM	Engine	CCs	Burner Voltage	Ship Wt (lbs)
PDHW5-35624E	1.110-060.0	4.7	3500	1125	Kubota Z602	599	12V DC	948
PDHW5-35624E/SS	1.110-061.0	4.7	3500	1125	Kubota Z602	599	12V DC	948
PDHW5-35624E/G	1.110-062.0	4.7	3500	1125	Kubota Z602	599	120V AC	998
PDHW5-35624E/G/SS	1.110-063.0	4.7	3500	1125	Kubota Z602	599	120V AC	998

E = Electric start engine (battery not included) G = 2,900 watt generator SS = Stainless steel frame

Field Installed Options & Accessories

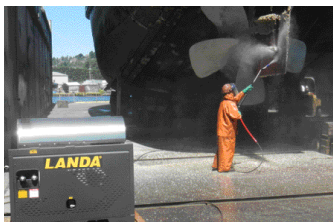
- 8.919-983.0 Hose Reel Platform Kit
- 8.904-525.0 Wheel Kit (4 tires)
- 8.919-981.0 Float Tank with Inlet Injection Kit
- 9.802-225.0 Downstream Detergent Injector Kit
- 8.919-984.0 Lifting Sling Kit
- 8.919-990.0 Lift/Stack Platform Kit
- 8.920-298.0 Lift/Stack Platform Kit, Stainless Steel
- 8.919-985.0 Stainless Steel Drip Pan Kit
- 8.919-988.0 Emergency Air Shutoff Kit
- 8.919-989.0 Engine Spark Arrester Kit

SLX & SLT



Hot Water > Diesel or Gas Powered > Diesel/Oil Heated

As large and powerful as they come, both series make easy work of the most stubborn grime and grease, making them ideally suited for the harsh conditions of mining and drilling operations and fleet cleaning. The SLX is the biggest portable pressure washer in the industry, capable of delivering water as hot as 200°F; with up to 9.9 GPM, there is enough flow to support dual-gun operation. The SLT is every bit as impressive, delivering up to 8.0 GPM and 3200 PSI of hot water cleaning. A distinctive stainless steel coil top wrap offers protection, and oversize vibration isolators cushion the engine and pump platform. With extra-large heating coils and fuel tanks, these rugged machines will deliver, even under the dirtiest of conditions!



- Up to 9.8 GPM, 2800 on SLX; up to 8.0 GPM, 3200 PSI on SLT
- Powered by either a diesel Kubota engine or gasoline Honda engine
- Belt-Drive Landa Kärcher Group Pump with 7-year warranty
- Delivers enough water flow to operate two spray guns at the same time
- Extra-large heating coils is made of cold-rolled, 3/4-inch Schedule 80 steel pipe and features a five-year warranty

Model #	Part #	GPM	PSI	Pump RPM	Engine	CCs	Engine Fuel	Ship Wt (lbs)
SLX10-25324E	1.110-525.0	9.5	2500	1560	Honda GX660	688	Gasoline	2020
SLX10-32624E	1.110-067.0	9.8	2800	1640	Kubota D1105	1123	Diesel	2120
SLT6-32324E	1.110-520.0	5.9	3200	1570	Honda GX630	688	Gasoline	1245
SLT8-30324E	1.110-522.0	7.8	3000	1470	Honda GX660	688	Gasoline	1230
SLT6-32624E	1.110-065.0	6.25	3200	1625	Kubota D1105	1123	Diesel	1745
SLT8-32624E	1.110-066.0	8.0	3200	1450	Kubota D1105	1123	Diesel	1811

*E = Electric start engine (battery not included)

Field Installed Options & Accessories

- 8.920-751.0 Float Tank w/ Inlet Injection
- 8.904-456.0 Downstream Injector
- 8.920-977.0 Steam Valve



Conseil-Vente-Service
514-494-5000 / 1-877-494-5001

ECOS

Hot Water > Gasoline Powered > Diesel/Oil Heated



If you're looking for a "green" solution to wastewater disposal, Landa Kärcher Group's patented* and revolutionary ECOS Mobile Wash and Reclaim System should be right up your alley. This environmentally friendly, patented mobile wash system combines a hot water pressure washer with a wastewater recovery and filtration system atop a trailer unit, making it simple to dispose of the gray wastewater from your pressure washing operation, or recycle and reuse it. You'll be in compliance with most municipal regulations, and will be doing your part to help conserve our precious natural resources. Contract cleaners, municipalities, and ports can all benefit from the addition of an ECOS mobile wash system to their stable of equipment.



- Up to 4.7 GPM, 3500 PSI
- Patented Trans-Heat Technology captures exhaust from the engine to preheat water, providing better fuel efficiency
- Four polyethylene water tanks provides 400 gallons of cleaning water
- Locked compartment includes dual fuel tanks for gas engine and diesel burner, and includes space for two detergent buckets

*Patent US D701,357 5

Model #	Version	Part #	GPM	PSI	Pump RPM	Engine	CCs	Ship Wt (lbs)
ECOS-7000	Standard	1.103-825.0	4.7	3500	1360	Honda GX660	688	3500
ECOS-7000	LX	1.103-838.0	4.7	3500	1360	Honda GX660	688	3500
ECOS-7000	DX	1.103-839.0	4.7	3500	1360	Honda GX660	688	3500

Field Installed Options & Accessories

- 8.739-074.0 Tuff-Skin 6000 PSI Hose, 100'
- 8.922-019.0 Spare Tire Kit, ECOS Trailer - No Panel (tire not included)
- 8.922-020.0 Spare Tire Kit, ECOS Trailer - With Panel (tire not included)
- 8.752-044.0 Tire/Wheel Assembly, Black, 15" Radial
- 8.903-606.0 Water Jet Surface Cleaner
- 8.922-791.0 Vacuum Nozzle Guard, Stainless Steel Plate

Replacement Filters and Parts

- 8.726-042.0 Filter Bag
- 8.726-045.0 5 Micron Carbon Filter Cartridge
- 8.726-044.0 20 Micron Pleated Filter Cartridge
- 8.754-082.0 200 Micron Pre-Filter Nylon Sock
- 8.726-046.0 Oil Absorbent Sock
- 8.919-317.0 Vacuum Nozzle Head Assembly with Guard

Field Installed Options & Accessories

- Drain Covers and Water Dikes
- 8.751-135.0 Drain Cover, 36" x 36", 30oz PVC
 - 8.751-136.0 Drain Cover, 48" x 48", 30oz PVC
 - 8.751-137.0 Drain Cover, 48" x 48", Urethane
 - 8.751-138.0 Water Dike, 10', 22oz PVC
 - 8.751-139.0 Water Dike, 10', 40oz Urethane
 - 8.751-140.0 Water Dike, 20', 22oz PVC
 - 8.751-141.0 Water Dike, 20', 40oz Urethane

DISTRIBUÉ PAR / DISTRIBUTED BY:



11365, 57e Avenue
Montréal (Québec)
H1E 4K1

Tél.: 514-494-5000
Sans frais 1-877-494-5001
Courriel: lp2000@bellnet.ca
Site Web : www.lp2000ehp.com

TR



TR-3500 Single Axle Trailer



TR-6000 Tandem Axle Trailer

Hot Water > Diesel or Gas Powered > Diesel/Oil Heated

On-site cleaning often requires the use of heavy, bulky equipment that isn't always easily transportable. Landa Kärcher Group offers a pair of rugged, top quality trailer-mounted wash systems to ease your burden. Available with a dual-axle or single-axle trailer, the TR features 2-by-3 inch structural tubing, standard electric brakes with break away kit, recessed electrical wiring and taillights, 1,000lb. swivel jacks with ball couplers for quick and easy hookups, a durable steel cage for holding the equipment in place, 15" whitespoke wheels, and a powder-coated epoxy finish to protect against the weather. Both are completely customizable: you'll choose a portable, industrial-grade Landa Kärcher Group hot water pressure washer, and select the options and accessories best suited to your cleaning needs, including chrome wheels, brake kits, and hose reels.



- Single or tandem axle, customizable hot water pressure washer trailer
- 200 or 230 gallon white high-density polyethylene water tank
- Powder-coated epoxy finish to help against the outdoor elements
- Optional mounting kits available for SLT, PGHW, PGDC and MHP
- Optional hose reel kits hold up to 200 feet of 3/8-inch high pressure hose
- Standard electric brake kits or optional hydraulic breaks

Model #	Part #	Axel	GVWR (lbs)	Water Tank	Ship Wt (lbs)
TR-3500	1.103-801.0	Single	3500	200 gal	720
TR-6000	1.103-804.0	Tandem	6000	330 gal	1080

Field Installed Options & Accessories

Hose Reel Kits (Hose Not Included)

- 8.902-447.0 Hose Reel Kit (100' capacity, 3/8" high-pressure hose) ♦
- 8.902-448.0 Hose Reel Kit (200' capacity, 3/8" high-pressure hose) ♦
- 8.902-449.0 Hose Reel Kit (100' capacity, 3/4" garden hose) ♦

Wheels and Fenders

- 8.902-466.0 Chrome Wheels Upgrade (per pair) ♦
- 8.902-468.0 Chrome Fender Assembly for Tandem Axle Upgrade (per pair) ♦
- 8.902-467.0 Chrome Fender Assembly for Single Axle Upgrade (per pair) ♦
- 8.707-493.0 Chrome Wheel with ST205/75D15/CTire (each) [spare] ♦

Mounting Kits

- 8.902-463.0 Mounting & Plumbing Kit for SLT ♦♦♦
- 8.902-454.0 Mounting & Plumbing Kit for SGHW, SDHW, PGHW5-50524E ♦♦♦
- 8.917-264.0 Mounting & Plumbing Kit for PGHW5-35324E, PGHW4-40324E ♦
- 8.920-435.0 Mounting & Plumbing Kit for PDHW5-35624E ♦
- 8.902-456.0 Mounting & Plumbing for PGDC, MHP ♦

♦ Factory Installed * TR-3500 Only ** TR-6000 Only

Field Installed Options & Accessories

Brakes

- 8.902-441.0 Hydraulic Brake Kit (single axle, 2" ball hitch) ♦*
- 8.902-442.0 Hydraulic Brake Kit (single axle, 3" lunette eye) ♦*
- 8.902-438.0 Hydraulic Brake Kit (two axles, 2-5/6" ball hitch) ♦♦*
- 8.902-452.0 Hydraulic Brake Kit (two axles, 3" lunette eye) ♦♦*

Signage Plate

- 8.902-469.0 Signage Plate ♦

Vinyl Skid Covers

- 8.709-109.0 Vinyl Skid Cover for SGHW, SDHW
- 8.749-946.0 Vinyl Skid Cover for PGHW, PGDC

Chemical Rack

- 8.912-409.0 2-5 gal. Bucket Chemical Rack ♦♦*

Hitch Couplers

- 8.924-493.0 2-5/6" Ball Hitch Coupler ♦*
- 8.902-436.0 3" Lunette Eye Hitch Coupler ♦*
- 8.924-475.0 2" Ball Hitch Coupler ♦♦*
- 8.902-471.0 3" Lunette Eye Hitch Coupler ♦♦*

♦ Factory Installed * TR-3500 Only ** TR-6000 Only

TRV



Hot Water > Diesel or Gas Powered > Diesel/Oil Heated

When your business is mobile in nature and you're shuttling often between jobsites, you'll want the convenience of a portable washing system that allows you to easily transport your cleaning equipment virtually anywhere. Landa Kärcher Group's TRV fills that niche beautifully, providing you with a rugged trailer with a heavy-duty chassis, sturdy wheel and axle assembly, 15" white-rimmed wheels, 1,000 lb. swivel jack for maneuvering your unhitched trailer, and a powder-coated epoxy finish for protection against the elements. The trailer is fully customizable — simply choose from five series of portable, industrial-grade Landa Kärcher Group hot water pressure washers, add the options and accessories you want, and you're in business! The TRV is an ideal solution for contract cleaners and those with versatile cleaning requirements.



- Single or tandem axle, customizable hot water pressure washer trailer
- 200 or 230 gallon white high-density polyethylene water tank
- Powder-coated epoxy finish to help against the outdoor elements
- Optional mounting kits available for SLT, PGHW, PGDC and MHP
- Optional hose reel kits hold up to 200 feet of 3/8-inch high pressure hose
- Optional surge brake or electric brake kits

Model #	Part #	Axel	GVWR (lbs)	Water Tank	Ship Wt (lbs)
TRV-3500	1.103-820.0	Single	3500	200 gal	1072

Field Installed Options & Accessories

Hose Reel Kits (Hose Not Included)

- 8.917-554.0 High Pressure Hose Reel (100' capacity) ♦
- 8.917-555.0 Low Pressure Hose Reel (100' capacity) ♦

Wheels

- 8.917-583.0 Wheel Kit (2 chrome wheels)

Mounting Kits

- 8.920-434.0 PDHW Mounting Assembly ♦
- 8.917-299.0 PGHW Mounting Assembly ♦*
- 8.915-494.0 MHC Mounting Assembly ♦
- 8.917-300.0 MHP Mounting Assembly ♦
- 8.917-399.0 PGDC Mounting Assembly ♦

Brakes

- 8.917-398.0 Hydraulic Brakes ♦

♦ Factory Installed * PGHW5-50524E Not Compatible

Field Installed Options & Accessories

Hitch Couplers

- 8.924-493.0 2-5/6" Ball Hitch Coupler ♦

Utility Rack

- 8.917-560.0 Utility Rack (rated for up to 150 lbs)

Saddle Boxes

- 8.917-558.0 Saddle Box (each)
- 8.917-556.0 Saddle Boxes (2 boxes) ♦

Rock Guards

- 8.917-557.0 Rock Guard ♦
- 8.917-559.0 Rock Guard

♦ Factory Installed * PGHW5-50524E Not Compatible

Tule Series HDS 3.5/40 GE Mt

Hot Water > Diesel or Gas Powered > Diesel/Oil Heated



Ready to pick up and go at a moments notice, Kärcher's Tule Series HDS 3.5/40 Ge MT hot water pressure washer trailer provides the necessary cleaning power on virtually any job site which has a water source. Simply unhitch the Tule Series HDS 3.5/40 Ge MT and take the cleaning power where you need it most. The Tule Series trailer features a reliable Honda engine, 8 gallon diesel fuel tank, electric start with manual start backup and much more.



- Honda GX 390 engine
- 8 gallon diesel fuel tank
- Adjustable thermostat for water temperature regulation
- Electric start with manual start backup

Model #	Part #	GPM	PSI	Drive	Start	Pump	Engine	Burner	Ship Wt (lbs)
HDS 3.5/40 Ge MT	1.103-844.0	3.5	4000	Direct	Electric	Kärcher KS	Honda GX390	12V / DC	1000

Field Installed Options & Accessories

8.756-481.0	EASY!Force trigger gun (North American Model) zero force required.
9.802-225.0	3 - 5 GPM Chemical Injector Kit
8.754-990.0	12V Battery (required for hot water operation)
8.924-366.0	2-inch ball coupler
8.711-293.0	Zinc plated variable pressure lance
8.924-367.0	2-5/16-inch Ball Coupler
8.924-667.0	Lifting Kit
8.924-370.0	LED Lights
8.924-700.0	2-inch Collar Lock Coupler
8.750-682.0	Hose Reel Fixed 100', 5000 PSI, 3250 F, equipped for 3/8" hose
8.925-255.0	Hose Reel Bracket (Mount Kit)

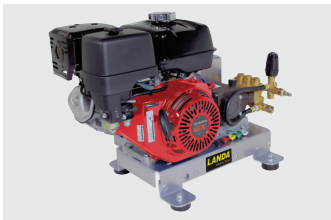
HD Gas



Cold Water > Gasoline Powered

Compact and corrosion-resistant, the HD Gas aluminum pressure washers have a modular frame that can be utilized as a cart or a skid (optional) for maximum cleaning versatility and durability. Easy to maneuver with puncture proof, flat free tires. These reliable Honda powered pressure washers offer a bypass loop for additional pump protection, as well as a 7-year warranty on the oil end of the pump. The simple design of the HD Gas helps get the job done quickly and without hassle.

Durable weldless, corrosion-resistant aluminum modular frame can convert from a cart to a skid.



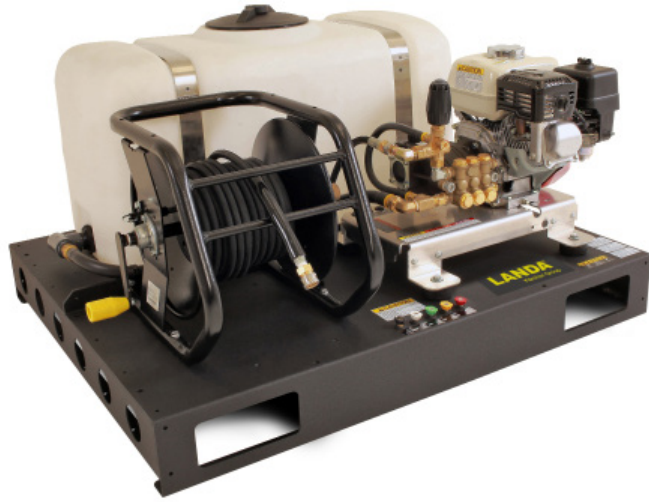
- Up to 4.0 GPM, 4000 PSI
- Belt- or Direct-Drive Models
- Reliable Honda Engines
- Modular Design
- Flat-Free Tires
- Compact Footprint

Model #	Part #	GPM	PSI	Drive	Start	Pump	Engine	CC	Ship Wt (lbs)
HD 3.0/27 G	9.807-727.0	3.0	2700	Direct	Recoil	LP3535G1	Honda GX200	196	112
HD 3.5/35 G	9.807-728.0	3.5	3500	Direct	Recoil	LB3030R	Honda GX270	270	130
HD 4.0/40 G	9.807-729.0	4.0	4000	Direct	Recoil	LS4040G.3	Honda GX390	389	149
HD 4.0/40 Ge	9.807-730.0	4.0	4000	Direct	Electric	LS4040G.3	Honda GX390	389	158
HD 3.0/27 GB	9.807-731.0	3.0	2700	Belt	Recoil	LP3035G	Honda GX200	196	123
HD 3.5/35 GB	9.807-732.0	3.5	3500	Belt	Recoil	LM3540R.3	Honda GX270	270	156
HD 4.0/40 GB	9.807-733.0	4.0	4000	Belt	Recoil	LM3840R.3	Honda GX390	389	160
HD 4.0/40 GeB	9.807-734.0	4.0	4000	Belt	Electric	LM3840R.3	Honda GX390	389	196

Field Installed Options & Accessories

9.807-754.0	Skid Mount Feet
9.807-750.0	37.5" Long Handle
9.807-753.0	Wand Holder
9.807-752.0	Hose Storage Hook
9.807-751.0	Handle with Hose Reel
8.753-572.0	A+ Surface Cleaner SC21
8.753-573.0	A+ Surface Cleaner SC24
9.302-243.0	Legacy Turbo Nozzle, 4.0, 4350 PSI
8.710-620.0	Legacy Superlite Stainless Steel Lance, 72" - 56.0 oz
8.712-429.0	Dirt Killer Rotating Nozzle
8.740-223.0	LegacyRawhide, 100'x3/8"ID, 4500PSI, 2-wire, smooth cover, black high pressure hose

HD Gas Skid



NEW! Cold Water > Gasoline Powered

Cleaning on the go. The perfect accompaniment to Landa Kärcher Group's HD Gas direct drive pressure washers – these mild steel skids offer two configurations: skid with a 50 gallon water tank and one 100' hose reel OR skid with two 100' hose reels. The HD Skids fit within a standard UTV / ATV bed when ordering the direct drive aluminum pressure washer models. NOTE: Belt drive models extend beyond the frame and are not recommended.



- 50 gallon water tank (HD Pallet Skid with Tank only)
- Forklift Hole
- Includes Skid Feet
- 1 to 2, 100' Hose Reel
- Fits within standard UTV/ATV bed

Model #	Part #	Frame Material	Water Tank	Hose Reel	Compatible Pressure Washer (sold separately)	Dimensions (L x W x H) inches	Ship Wt (lbs)
HD Pallet Skid with Tank	9.807-834.0	Mild Steel	50 gallon	1	HD 3.0/27 G 9.807-727.0 HD 3.5/35 G 9.807-728.0 HD 4.0/40 G 9.807-729.0	40 x 48 x 35	180
HD Pallet Skid with 2 Reels	9.807-839.0	Mild Steel	Not Included	2	HD 3.0/27 G 9.807-727.0 HD 3.5/35 G 9.807-728.0 HD 4.0/40 G 9.807-729.0	40 x 48 x 35	172

Field Installed Options & Accessories

9.807-754.0	Skid Mount Feet
9.807-750.0	37.5" Long Handle
9.807-753.0	Wand Holder
9.807-752.0	Hose Storage Hook
9.807-751.0	Handle with Hose Reel
8.753-572.0	A+ Surface Cleaner SC21
8.753-573.0	A+ Surface Cleaner SC24
9.302-243.0	Legacy Turbo Nozzle, 4.0, 4350 PSI
8.710-620.0	Legacy Superlite Stainless Steel Lance, 72" - 56.0 oz
8.712-429.0	Dirt Killer Rotating Nozzle
8.740-223.0	Legacy Rawhide, 100' x 3/8" ID, 4500 PSI, 2-wire, smooth cover, black high pressure hose

MP



Cold Water > Gasoline Powered

With a variety of available engines delivering up to 5000 PSI, there is no other cold water pressure washer on the market with such versatility and blasting power as these series offer. Portable and rugged, they come equipped with high-impact steel roll cage and lifting bar and either two (MP) or four (MPE) 13" flat-free tires for easy all-terrain maneuverability, making them excellent choices for tackling a variety of cleaning sites. They include 50' of high-pressure hose rated up to 6000 PSI – more than enough for removing the toughest dirt and grime from your equipment.



- Up to 4.5 GPM, 5000 PSI
- Powered by either a Honda or Kohler gasoline engine
- Belt-Drive Landa Kärcher Group Pump with 7-year warranty
- Rugged roll cage and 10-gauge steel chassis protected with weather-resistant epoxy powder coat paint
- 5-Gallon fuel tank provides up to 5 hours of continuous cleaning

Model #	Part #	GPM	PSI	Pump RPM	Engine	CCs	Engine Fuel	Ship Wt (lbs)
MP-373534	1.107-001.0	3.7	3500	1185	HondaGX390	389	Gasoline	295
MP-455034E*	1.107-002.0	4.5	5000	1185	HondaGX660	688	Gasoline	415
MP-343084E*	1.107-082.0	3.4	3000	1185	KohlerKD420	401	Diesel	388

E = Electric start engine (battery not included)

* Tandem axle model

Field Installed Options & Accessories

- 9.801-028.0 E-Zee Hose Reel Kit, (single axle, 100' capacity)
- 9.801-029.0 Non-Pivot Hose Reel Kit, (tandem axle, 100' capacity)

PG



Cold Water > Gasoline Powered

Landa Kärcher Group's flagship series of cold-water pressure washers, the PG & PE are the most popular machines for everyday use in a variety of industrial cleaning applications. Each has a rugged chassis, 13" tires for easy maneuvering over all types of terrain, and shock absorbing, spring-loaded rubber feet to cut down on vibration. Handles on the front and back are easy to grip, so you won't have a problem loading or unloading these machines. With thirteen different models to choose from between the two series, there is a perfect fit for your unique



- Up to 4.7 GPM, up to 4000 PSI
- Powered by a Honda or Vanguard gasoline engine
- Belt-Drive Landa Kärcher Group Pump with 7-year warranty
- Rugged 10-gauge steel chassis protected with weather-resistant epoxy powder coat paint
- Two spring-loaded rubber pad feet help to prevent unit from

Model #	Part #	GPM	PSI	Pump RPM	Engine	CCs	Ship Wt (lbs)
PG4-20324	1.107-010.0	4.2	2000	1300	Honda GX270	270	230
PG4-35324	1.107-011.0	3.7	3500	1185	Honda GX390	389	255
PG5-35224E	1.107-013.0	4.7	3500	1185	Vanguard 16	479	300
PG4-40324E	1.107-012.0	4.0	4000	1190	Honda GX630	688	274

E = Electric start engine (battery not included)

PC



PC4-35324

Cold Water > Gasoline Powered

Like the PG & PE models, the PC cold-water pressure washers offer an array of options and features for cleaning multiple surfaces indoors and outdoors, but utilize direct-drive instead of belt-drive pumps. Each comes equipped with 50' of Landa Kärcher Group's durable wire-braid high-pressure hose, and a thermal pump protector to prevent overheating while in bypass mode. Shock-absorbing rubber feet reduce vibration and prevent movement during operation, and handles on the front and back make these machines a breeze to load and unload.



- Up to 3.8 GPM, up to 4000 PSI
- Powered by a Honda gasoline engine
- Direct-Drive Landa Kärcher Group Pump with 7-year warranty
- Rugged 10-gauge steel chassis protected with weather-resistant epoxy powder coat paint
- Two 10-inch, 4-ply, tubed pneumatic tires make for easy maneuvering

Model #	Part #	GPM	PSI	Pump RPM	Engine	CCs	Ship Wt (lbs)
PC3-24324	1.107-005.0	2.3	2400	3200	Honda GX160	163	135
PC3-27324	1.107-006.0	2.5	2700	3200	Honda GX200	196	128
PC4-35324	1.107-008.0	3.8	3500	3200	Honda GX390	389	188
PC4-40324	1.107-224.0	3.5	4000	3200	Honda GX390	389	185

HD Electric



NEW! Cold Water > Electric Powered

Designed for versatility, the HD Electric carts are corrosion-resistant aluminum pressure washers that easily convert from a cart to a skid for maximum cleaning agility and durability. These reliable pressure washers have a low profile handle and compact footprint, making them easy to maneuver. They also offer a bypass loop for additional pump protection, a 7-year pump warranty and flat-free tires. All models are ETL certified to UL safety standards.



- Durable, corrosion resistant aluminum frame
- Modular design - weld free frame easily converts from cart to skid
- VRT3 Unloader with bypass loop - pump protection
- Flat free tires
- Commercial-duty crankcase pump
- ETL certified to UL and CSA standards

Model #	Part #	GPM	PSI	Pump	Pump RPM	Motor HP	Volts	Phase	Amps	Ship Wt (lbs)
HD 2.0/10 Ed	9.801-805.0	2.0	1000	LF2030S	1725	1.5	120	1	15	161.60
HD 1.9/13 Ed	9.801-806.0	1.9	1300	LF2030F	3450	2.0	120	1	20	174.85
HD 3.0/10 Ea	9.801-807.0	3.0	1000	LF2830S	1725	2.0	120	1	20	180.36
HD 3.5/20 Ea	9.801-808.0	3.5	2000	LF3530F	3450	5.0	230	1	22	181.46
HD 1.8/1350 Ed*	9.801-809.0	1.8	1350	LF2030F	3450	2.0	120	1	17	179.25

* HD 1.8/1350 Ed comes equipped with Auto Start/Stop

Field Installed Options & Accessories

- 9.807-754.0 Skid Mount Feet
- 9.807-750.0 37.5" Long Handle
- 9.807-753.0 Wand Holder
- 9.807-752.0 Hose Storage Hook
- 9.807-751.0 Handle with Hose Reel
- 8.753-572.0 A+ Surface Cleaner SC21
- 8.753-573.0 A+ Surface Cleaner SC24
- 9.302-243.0 Legacy Turbo Nozzle, 4.0, 4350 PSI
- 8.710-620.0 Legacy Superlite Stainless Steel Lance, 72" - 56.0 oz
- 8.712-429.0 Dirt Killer Rotating Nozzle
- 8.740-223.0 Legacy Rawhide, 100' x 3/8" ID, 4500 PSI, 2-wire, smooth cover, black high pressure hose

PE



Cold Water > Electric Powered

The PE is one of our most popular machines for everyday use in a variety of industrial cleaning applications. Only the highest quality components are used on the PE, including our tri-plex high-pressure pump with 7-year warranty, industrial-duty motor, durable steel frame with welded seams, and a stainless steel point and shoot wand for cleaning effectiveness. In addition to being certified to the rigid UL-1776 safety standards, the PE has a 24-inch hose guard for burst protection and tri-lingual operating instructions for owner liability assurance. A number of features make the PE especially popular with users who seek to reduce their cleaning time, such as chrome-plated handles on both front and back for easy vehicle loading. The pneumatic tires make for easy maneuvering, and two shock absorbing, spring-loaded rubber feet to keep the PE from "walking" while in operation.



- up to 4.8 GPM and 3000 PSI
- Belt-Drive Landa Kärcher Group Pump with 7-year warranty
- Industrial-duty motor
- Rugged 10-gauge steel chassis protected with weather-resistant epoxy powder coat paint
- Two spring-loaded rubber pad feet help to prevent unit from "walking"

Model #	Part #	GPM	PSI	Pump RPM	Motor HP	Volts	Phase	Amps	Ship Wt (lbs)
PE2A-15024D*	1.106-105.0	1.8	1500	1650	2.0	120	1	21	193
PE3-11024D	1.106-009.0	2.8	1000	1540	2.0	120	1	20	193
PE4-20024A	1.106-010.0	4.2	2000	900	6.2	230	1	27	285
PE4-20024B	1.106-011.0	4.2	2000	900	6.2	230	3	16	265
PE4-20024C	1.106-012.0	4.2	2000	900	6.2	460	3	8	266
PE4-30024A	1.106-013.0	3.5	3000	800	7.5	230	1	36	337
PE4-30024B	1.106-014.0	3.5	3000	800	7.5	230	3	21.5	290
PE4-30024C	1.106-015.0	3.5	3000	800	7.5	460	3	10.5	280
PE5-30024B	1.106-016.0	4.8	3000	1060	10.0	230	3	26.8	290
PE5-30024C	1.106-017.0	4.8	3000	1060	10.0	460	3	13.4	285

* PE2A-15024D comes equipped with Auto Start/Stop, two yellow nozzles, two green nozzles, and a variable pressure wand. Contact your local dealer for more details.

SEA



SEA - Stainless Steel



SEA - Mild

Cold Water > Electric Powered

This top-of-the-line stationary cold-water series features a heavy-duty stainless steel or mild steel cabinet and comes standard with an insulated variable pressure wand, 50' of hose, and time delay shutdown. Available options include our LanCom wireless remote control, floor stand, and wall mount bracket assembly. There is even an optional wheel kit for adding mobility, making an already top-quality machine even more flexible than before. This unit is ideal for cleaning a variety of indoor surfaces, and can be plumbed



- Up to 4.2 GPM, up to 3000 PSI
- Available with a stainless steel cabinet or a mild steel cabinet
- Belt-Drive Landa Kärcher Group Pump with 7-year warranty
- Easily accepts hot water up to 185°F
- Optional LanCom Remote allows users to work up to 300 feet away
- Optional wheel kit

Model #	Part #	Cabinet	GPM	PSI	Pump RPM	Motor HP	Volts	Phase	Amps	Ship Wt (lbs)
SEA3-11024D	1.106-500.0	SS	2.8	1000	1540	2.0	120	1	20	205
SEA4-20024A	1.106-501.0	SS	4.2	2000	1013	6.2	230	1	28	280
SEA4-20024B	1.106-502.0	SS	4.2	2000	1013	6.2	230	3	16	220
SEA4-20024C	1.106-503.0	SS	4.2	2000	1013	6.2	460	3	7.2	220
SEA4-20024G	1.106-505.0	SS	4.2	2000	997	6.2	208	1	30	297
SEA4-20024H	1.106-506.0	SS	4.2	2000	1028	6.2	208	3	18.5	220
SEA4-30024B	1.106-507.0	SS	3.5	3000	943	7.5	230	3	21.5	235
SEA4-30024C	1.106-508.0	SS	3.5	3000	943	7.5	460	3	10.5	235
SEA3-11024D	1.106-583.0	MS	2.8	1000	1500	2.0	120	1	20	210
SEA4-20024A	1.106-584.0	MS	4.2	2000	1281	6.2	230	1	29	285
SEA4-20024B	1.106-585.0	MS	4.2	2000	1281	6.2	230	3	11	255
SEA4-20024C	1.106-586.0	MS	4.2	2000	1281	6.2	460	3	11	260
SEA4-20024H	1.106-587.0	MS	4.2	2000	1281	6.2	208	3	16	265
SEA4-30024B	1.106-588.0	MS	3.5	3000	1070	7.5	230	3	19	275
SEA4-30024C	1.106-589.0	MS	3.5	3000	1070	7.5	460	3	11	270

Field Installed Options & Accessories

- 9.801-036.0 Cox Hose Reel Kit (floor stand / wall mount)
- 8.903-521.0 E-Zee Hose Reel & Mounting Kit (fits wheel kit)
- 9.802-265.0 Hose Reel, Mini, (fits wall bracket, 150' capacity)
- 8.711-860.0 Hose Reel, Mini, (fits wall bracket, 100' capacity)
- 9.801-035.0 Wheel Kit (4 casters)
- 9.801-031.0 Wheel Kit with Detergent Rack
- 8.903-040.0 24" Floor Stand
- 9.801-034.0 36" Floor Stand
- 8.903-617.0 36" Floor Stand (stainless steel)

♦ Factory Installed * Float Tank cannot be ordered with Wheel Kit
 • Not compatible with LanCom ⚠ Not compatible with Auto Start/Stop or Float

Field Installed Options & Accessories

Stainless Steel Models Only

- 8.930-163.0 LanCom Wireless Remote Control, 1-Step Detergent ♦8
- 8.930-177.0 LanCom Wireless Remote Control, 2-Step Detergent ♦8
- 8.903-461.0 Remote On/Off Switch Option (Time Delay units only)
- 8.930-358.0 Additional LanCom Remote
- 8.903-619.0 Wall Mount Bracket Assembly
- 8.930-131.0 Wall Mount Bracket for Fixed LanCom Remote
- 8.903-511.0 Auto Start/Stop (Replaces Time Delay Shutdown) ♦8
- 8.904-527.0 Wheel Kit with Detergent Rack (stainless steel)*
- 8.903-448.0 Float Tank Option with Inlet Soap Injection ♦*8

Mild Steel Models Only

- 9.801-011.0 Auto Start/Stop ♦*
- 9.801-013.0 Hour Meter ♦
- 9.801-012.0 Time Delay Shutdown ♦
- 9.801-033.0 Wall Mount Bracket Assembly

MPE



Cold Water > Electric Powered

With a variety of available engines delivering up to 5000 PSI, there is no other cold water pressure washer on the market with such versatility and blasting power as these series offer. Portable and rugged, they come equipped with a high-impact steel roll cage and lifting bar and either two (MP) or four (MPE) 13" flat-free tires for easy all-terrain maneuverability, making them excellent choices for tackling a variety of cleaning sites. They include 50' of high-pressure hose rated up to 6000 PSI – more than enough for removing the toughest dirt and grime from your equipment.



- Up to 5.0 GPM and 5000 PSI
- Belt-Drive Landa Kärcher Group Pump with 7-year warranty
- Rugged roll cage and 10-gauge steel chassis protected with weather-resistant epoxy powder coat paint
- Lifting bar for easy maneuverability
- Flat-free tires

Model #	Part #	GPM	PSI	Pump RPM	Motor HP	Volts	Phase	Amps	Ship Wt (lbs)
MPE5-50024B	1.106-001.0	5.0	5000	1900	20.0	230	3	48	534
MPE5-50024C	1.106-002.0	5.0	5000	1900	20.0	460	3	26	511

Field Installed Options & Accessories

9.801-028.0	E-Zee Hose Reel Kit, (single axle, 100' capacity)
9.801-029.0	Non-Pivot Hose Reel Kit, (tandem axle, 100' capacity)

ZE/ZEF



ZE2-11026D



ZEF2-14024D

Cold Water > Electric Powered

And when it comes to convenience, our ZE/ZEF series can't be beat. This tough handheld unit is designed specifically for cleaning in tight quarters, and comes standard with a remote on/off switch and auto start/stop. An optional wall mount and wand holder kit is available for those shops where space is at a premium. An extra set of illustrated operation and warning stickers can be placed at eye level, ensuring the safety of all employees in your plant. While it is an excellent choice for cleaning indoor work areas and equipment, its industrial-strength



- Up to 2.0 GPM, 1000 PSI on ZE; up to 1.8 GPM, 1400 PSI on ZEF
- Direct-Drive Landa Kärcher Group Pump with 7-year warranty on ZEF
- Direct-Drive axial pump with 1-year warranty on ZE
- Auto Start/Stop comes standard on ZEF
- Remote wall switch with 10-foot electrical cord supplied with

Model #	Part #	GPM	PSI	Pump	Pump RPM	Motor HP	Volts	Phase	Amps	Ship Wt (lbs)
ZE2-11026D	1.106-023.0	2.0	1000	Axial	3450	1.5	120	1	15	93

Model #	Part #	GPM	PSI	Pump RPM	Motor HP	Volts	Phase	Amps	Ship Wt (lbs)
ZEF2-14024D	1.107-090.0	1.8	1400	1725	2.0	120	1	20	125

Field Installed Options & Accessories

- 8.920-952.0 Wall Mount & Wand Holder
- 8.904-464.0 Quick-Coupled Soap Injector, 6' Poly Tubing

HS & NG

Hot Water Generators

When you want to boost the cleaning power of your cold water pressure washer without upgrading to a new machine, consider an alternative: one of Landa Kärcher Group's hot water generators. Simply attach either the natural gas heated NG or the electric-powered, diesel or oil heated HS to your cold water pressure washer, and transform your machine into a powerful hot water washer. The stationary NG includes an option for LP gas and features an electronic ignition, while the HS comes standard with 10" wheels for portability. Landa Kärcher Group emphasizes safety as well as quality, and both machines are outfitted with a trio of safety features (a rupture disk, high-limit thermostat, and flow switch) to prevent heat and pressure from building up excessively, providing you with the assurance that your equipment is both efficient and safe!



HS-3000

NG-3000



- Increases incoming water temperature as much as 150°F above the water's ambient temperature, depending on the flow rate
- Features a high-efficiency burner
- 12-gauge steel chassis with weather-resistant epoxy powder coat paint
- Extra-durable heating coil made of leak-free, cold-rolled, Schedule 80 steel pipe with 5-year warranty

Model #	Part #	GPM	PSI	Volts	Phase	Amps	BTUs	Ship Wt (lbs)
HS-3000	1.103-900.0	up to 6	3000	120	1	5	420,000	425

Model #	Part #	Fuel	GPM	PSI	Max BTUs	Ship Wt (lbs)
NG-3000	1.103-901.0	Natural Gas	Up to 6	3000	420,000	450
NG-3000LM	1.103-902.0	Natural Gas	Up to 10.6	3000	800,000	900

Field Installed Options & Accessories

HS Models Only

- 9.804-067.0 E-Zee Hose Reel (100' capacity)
- 8.903-522.0 E-Zee Hose Reel Mounting Kit
- 8.903-530.0 Stainless Steel Outer Wrap ♦

♦ Factory Installed

Field Installed Options & Accessories

NG Models Only

- 9.801-042.0 LP Conversion Kit (for NG-3000) ♦
- 8.904-068.0 LP Conversion Kit (for NG-3000LM) ♦
- 9.802-633.0 LP Regulator Assembly
- 9.801-040.0 Draft Diverter, 10" (NG-3000)
- 8.717-730.0 Draft Diverter, 12" (NG-3000LM)
- 8.912-689.0 Support Table, 8" (for NG-3000LM)

♦ Factory Installed



Detergents



Please contact us for more information:

Kärcher Canada, Inc.

6535 Millcreek Drive, Unit 67
Mississauga, ON L5N 2M2, Canada

Tel. +1 888 705-9444
Fax +1 800 465-6013
Email orders_kci@karcherna.com

www.landa.com

01/2018 - All rights reserved - 8.913-8580.

